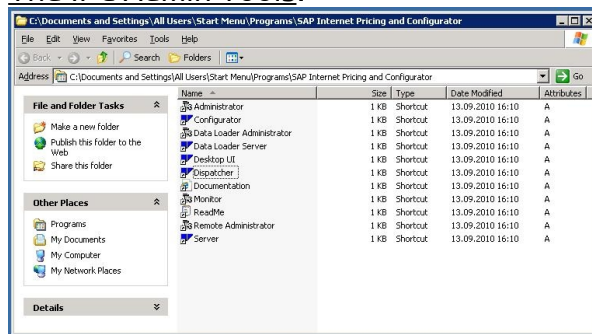


Internet Pricing and Configurator (v3.0+)



Introduction:

- The IPC Admin Tools:



- In IPC v2.0C, the IPC Bridge was introduced as an added component. The Bridge enables ABAP code to call IPC server commands via RFC function calls. It acts as an RFC server for a SAP System on one side, and as a IPC client for the ICP Server on the other side, taking care of the necessary data transformations between ABAP and Java.
- In IPC 3.0, the Bridge's functionality was integrated into the IPC server (and dispatcher), using SAP's "Java Connector" (*JCo*) as an RFC interface. This way the same functionality is provided not only on Windows computers (like the Bridge) but on all platforms supported by "JCo" - particularly, this allows IPC to run on Solaris machines.
An additional advantage of directly integrating the Bridge into the IPC server is that several communication and conversion steps could be eliminated, leading to increased performance.
- Previously all IPC requests were transmitted from ABAP to the Bridge (over an RFC network connection), where they were converted to a IPC request string, which in turn was transmitted (over a 2nd network connection) to the IPC server - the same steps were necessary to transmit the server's response back to ABAP. Now the RFC request is directly passed to the IPC server which works on it w/o any string conversion, IPC commands directly write their response to the output and table parameters of the RFC function.
- **CAUTION:** No performance tests have been done at the time of compiling this information, but major improvements *should* be gained.